

FEATURES :

- Shortened drive length
- Extended speed range
- Minimal maintenance due to "bearings only" contact
- High overall performance accuracy

Safety Considerations: "It would be unsafe to operate Lebow® Torque Sensors and Load Cells beyond Static Overload or Ultimate Extraneous Load Limits as defined in the Glossary of Terms or, when applicable, higher than maximum speed. When in doubt, consult the factory. Lebow® Products is not responsible for any property damage or personal injury which may result because of the misapplication of the Transducer."

PERFORMANCE SPECS : 1815

SPECIFICATIONS

Actual performance average:

Nonlinearity:	0.026%
Hysteresis:	0.016%
Nonlinearity: of rated output	± 0.05%
Hysteresis: of rated output	± 0.05%
Output at rated capacity: millivolts per volt, nominal	2
Repeatability: of rated output	± .03%
Zero balance: of rated output	± 1.0%
Bridge resistance: ohms nominal	350
Temperature range, compensated: °F	+70 to +170
Temperature range, compensated: °C	+21 to +77
Temperature range, usable: °F	-20 to +200
Temperature range, usable: °C	-29 to +93
Temperature effect on output: of reading per °F	± 0.002%
Temperature effect on output: of reading per °C	± 0.0036%
Temperature effect on zero: of rated output per °F	± 0.002%
Temperature effect on zero: of rated output per °C	± 0.0036%
Excitation voltage, 10 VAC max. rms:	3.28 kHz optimum
Insulation resistance, bridge/case: megohms at 50 VDC	>5,000
Number of bridges	1

Other models available: 1115K, 1115A and 1615K.

MODEL 1815

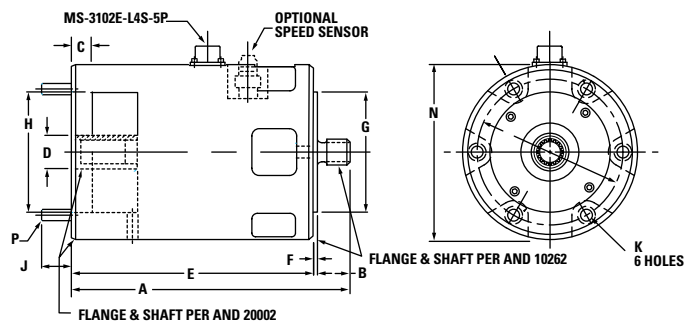
Flange housing mount with AND pads to match Army-Navy mountings standard. Spline drive.



Model 7927 shunt cal reference box included with each purchase of 1800 series.

SENSOR CHARACTERISTICS : 1815

MODEL NUMBER	CAPACITY lb. in. (N • m)	MAX. SPEED RPM	PROTECTED FOR OVERLOADS TO lb. in. (N • m)
1815A-50	50 (5)	25,000	150 (15)
1815A-100	100 (10)	25,000	300 (30)
1815A-200	200 (20)	25,000	600 (60)
1815A-500	500 (55)	25,000	1,500 (165)
1815A-1K	1,000 (115)	25,000	1,500 (165)
1815K-50	50 (5)	15,000	150 (15)
1815K-100	100 (10)	15,000	300 (30)
1815K-200	200 (20)	15,000	600 (60)
1815K-500	500 (55)	15,000	1,500 (165)
1815K-1K	1,000 (115)	15,000	3,000 (330)
1815K-2K	2,000 (225)	15,000	6,000 (675)
1815K-5K	5,000 (565)	15,000	15,000 (1,695)
1815K-10K	10,000 (1,130)	15,000	15,000 (1,695)



1815A	IN.	CM.
A	9.27	23.55
B	1.05	2.67
C	0.63	1.60
D	1.12	2.84
E	8.25	20.96
F	0.14	0.36
G	4.12	10.47
H	4.13	10.48
J	1.03	2.62
K	0.41	1.03
L	5.00	12.70
N	6.00	15.24
P	3/8-24	-

1815K	IN.	CM.
A	9.94	25.25
B	1.69	4.29
C	0.63	1.60
D	1.58	4.01
E	8.25	20.96
F	0.14	0.36
G	4.12	10.47
H	4.13	10.48
J	1.03	2.62
K	0.41	1.03
L	5.00	12.70
N	6.00	15.24
P	3/8-24	-

INTERNAL AND EXTERNAL SPLINE DATA

MODEL	PRESSURE ANGLE	PITCH DIA. in. (cm.)	PITCH	NO. OF TEETH
1815A	30°	0.80 (2.03)	20/30	16
1815K	30°	1.20 (3.05)	20/30	24

MODEL 1115A AND 1115K



Other designs that conform to Army/Navy mounting standard. Please consult factory for details about 1115 and 1615 sensor designs.

MODEL 1615K



Consult factory for specials.

