

FEATURES :

- High torsional stiffness
- Low rotating inertia
- Mates directly to commercially available couplings
- Digital telemetry

PERFORMANCE SPECS : 2000

SPECIFICATIONS	TOLERANCE
Rated capacities: <i>ft. lbs.</i>	From 100 to 60K
Output sensitivity: <i>at full scale load</i>	+/- 5 VDC
Overall accuracy:	≤0.25%
Temperature range, compensated: °F	+70 to +170
Temperature range, usable: °F	32 to +185
Temperature effect on output: <i>of reading per °F</i>	± 0.002%
Temperature effect on zero: <i>of rated output per °F</i>	± 0.002%
Torque limit: % of FS	150
Breaking torque: % of FS	200
Axial float: <i>permissible, minimum</i>	± 0.25"
Accel/Decel, maximum: <i>ft./sec²</i>	1800

ELECTRICAL VALUES	TOLERANCE
Output at receiver:	NEMA-12 Enclosure: 4-20mA, ±5 VDC bipolar or 0-2.5-5.0 VDC unipolar
	Benchtop Instrument: (Optional) 5 digit display with units scaling, ±5 VDC bipolar or 0-2.5-5.0 VDC unipolar, RS232, limit alarms

Power requirements:	
AC:	120 VAC, 50/60Hz
(Optional) DC:	+10 to +18 VDC
Frequency response:	
<i>input sampling:</i>	26,000 samples per second
<i>amplifier bandwidth:</i>	2kHz @ 3db
Filtering:	6 pole low pass filter with 3db cutoff at 2kHz
Digital resolution:	12 bits
Cable length:	24 ft.
<i>receiver to pickup</i>	(other lengths optional)
Excitation voltage: <i>at bridge</i>	5 VDC, single ended
Shunt calibration (0.01%):	Shunt value supplied by factory for field setup

Request certified drawings before designing mountings or fixtures. Dimensions and specifications are subject to change without notice. **Consult factory for higher accuracy and higher capacity versions.** **Alternate mounting configuration designs available.**

MODEL 2000

Short flange dynamometer sensor

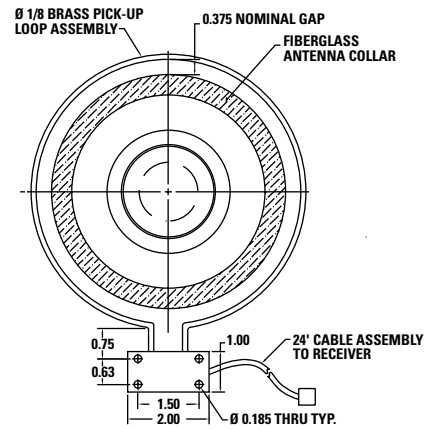
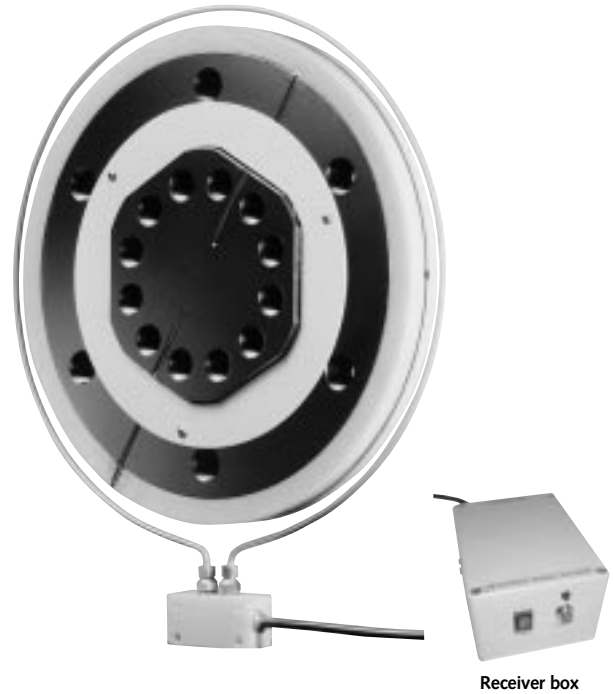
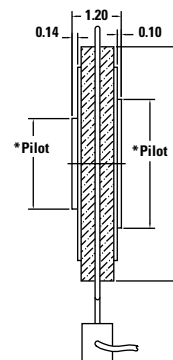


Illustration represents maximum values.



*Consult factory for dimensions.

DYNAMIC LOAD CHARACTERISTICS : 2000

MODEL NUMBER	RATED CAPACITY ft. lbs.	RATED CAPACITY in. lbs. (N • m)	SPEED, NOMINAL: RPM	TORSIONAL STIFFNESS x 10 ⁵ in. lbs./rad.	ROTATING INERTIA lb. in. sec. ²	THRUST lbs.	SHEAR lbs.	BENDING LIMIT in. lbs.
2000-100	100	1.20K (136)	16,000	11	0.04	500	600	1,000
2000-100	250	3K (339)	16,000	74	0.04	2,000	1,500	4,000
2000-200	500	6K (678)	13,000	75	0.08	500	1,250	1,250
2000-200	750	9K (1,017)	13,000	112	0.08	1,500	2,000	3,000
2000-200	1K	12K (1,356)	13,000	149	0.08	2,500	2,500	5,000
2000-300	1.5K	18K (2,034)	11,000	186	0.17	1,000	1,800	2,000
2000-300	2K	24K (2,712)	11,000	248	0.17	1,800	2,400	3,500
2000-400	3K	36K (4,068)	9,000	986	0.34	3,000	2,500	6,500
2000-400	4K	48K (5,424)	9,000	1,315	0.35	5,500	3,500	11,500
2000-500	5K	60K (6,780)	8,000	985	0.51	4,500	7,000	9,000
2000-500	6K	72K (8,136)	8,000	1,182	0.51	6,500	9,000	13,000
2000-500	8K	96K (10,847)	8,000	1,576	0.51	10,000	11,000	20,000

Consult factory for larger capacities.

PHYSICAL CHARACTERISTICS : 2000

MODEL NUMBER	RATED CAPACITY ft. lbs.	RATED CAPACITY in. lbs. (N • m)	WEIGHT SENSOR ONLY LBS.	O.D. SENSOR in.	BOLT SIZE OUTER RING*†	NUMBER OF BOLTS, OUTER RING	B.C. DIAMETER, OUTER RING: in.	BOLT SIZE, INNER HUB†	NUMBER OF BOLTS, INNER HUB	B.C. DIAMETER, INNER HUB: in.
2000-100	100	1.20K (136)	5	5.74	¼-20	6	3.75	10-24	18	1.84
2000-100	250	3K (339)	5	5.74	¼-20	6	3.75	10-24	18	1.84
2000-200	500	6K (678)	6	7.00	¾-24	8	4.81	½-20	8	2.25
2000-200	750	9K (1,017)	6	7.00	¾-24	8	4.81	½-20	8	2.25
2000-200	1K	12K (1,356)	6	7.00	¾-24	8	4.81	½-20	8	2.25
2000-300	1.5K	18K (2,034)	11	8.00	½-20	6	5.88	7/16-20	12	2.63
2000-300	2K	24K (2,712)	11	8.00	½-20	6	5.88	7/16-20	12	2.63
2000-400	3K	36K (4,068)	16	9.40	5/8-18	6	7.13	9/16-18	12	3.50
2000-400	4K	48K (5,424)	16	9.40	5/8-18	6	7.13	9/16-18	12	3.50
2000-500	5K	60K (6,780)	20	10.50	½-20	12	8.00	¾-16	8	4.00
2000-500	6K	72K (8,136)	20	10.50	½-20	12	8.00	¾-16	8	4.00
2000-500	8K	96K (10,847)	20	10.50	½-20	12	8.00	¾-16	8	4.00

*Optional bolt size through-holes available upon request. † Bolt sizes available in metric.
Consult factory for larger capacities.

