

**FEATURES :**

- No maintenance of slip rings, bearings or brushes
- Minimal friction error
- Low end sensitivity
- Reaction measurements eliminate speed limitations

**Safety Considerations:** "It would be unsafe to operate Lebow® Torque Sensors and Load Cells beyond Static Overload or Ultimate Extraneous Load Limits as defined in the Glossary of Terms or, when applicable, higher than maximum speed. When in doubt, consult the factory. Lebow® Products is not responsible for any property damage or personal injury which may result because of the misapplication of the Transducer."

**PERFORMANCE SPECS :**  
**2121-2126**

**SPECIFICATIONS**

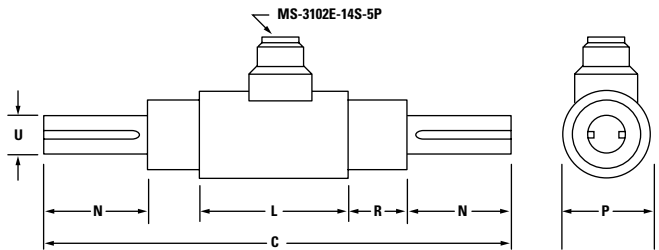
**Actual performance average:**

Nonlinearity:	0.026%
Hysteresis:	0.031%
<b>Nonlinearity:</b> of rated output	± 0.1%
<b>Hysteresis:</b> of rated output	± 0.1%
<b>Output at rated capacity:</b> millivolts per volt, nominal	2*
<b>Repeatability:</b> of rated output	± 0.05%
<b>Zero balance:</b> of rated output	± 1.0%
<b>Bridge resistance:</b> ohms nominal	350
<b>Temperature range, compensated:</b> °F	+70 to +170
<b>Temperature range, compensated:</b> °C	+21 to +77
<b>Temperature range, usable:</b> °F	-65 to +200
<b>Temperature range, usable:</b> °C	-54 to +93
<b>Temperature effect on output:</b> of reading per °F	± 0.002%
<b>Temperature effect on output:</b> of reading per °C	± 0.0036%
<b>Temperature effect on zero:</b> of rated output per °F	± 0.002%
<b>Temperature effect on zero:</b> of rated output per °C	± 0.0036%
<b>Excitation voltage, maximum:</b> volts DC or AC rms	20
<b>Insulation resistance, bridge/case:</b> megohms at 50 VDC	>5,000
<b>Number of bridges</b>	1

\*Model 2126-500K output at rated capacity is 2.7 mV/V nominal.  
**Higher capacities available. Consult factory for details.**

**MODEL 2121-2126**

**Shaft reaction torque sensors**



	2121-100, IN.	CM.
<b>200</b>		
<b>C</b>	10	25.40
<b>L</b>	2.38	6.03
<b>N</b>	2.25	5.72
<b>P</b>	2	5.08
<b>U*</b>	0.75	1.91
<b>R</b>	0.56	14.29

	2121-500, IN.	CM.
<b>1K, 2K</b>		
<b>C</b>	10	25.40
<b>L</b>	2.38	6.03
<b>N</b>	2.25	5.72
<b>P</b>	2	5.08
<b>U*</b>	1	2.54
<b>R</b>	0.56	14.29

	2122-5K, IN.	CM.
<b>10K</b>		
<b>C</b>	12.75	32.40
<b>L</b>	3	7.62
<b>N</b>	2.97	7.54
<b>P</b>	2	5.08
<b>U*</b>	1.50	3.81
<b>R</b>	2.38	6.03

	2124-20K IN.	CM.
<b>10K</b>		
<b>C</b>	14.63	37.15
<b>L</b>	3.75	9.53
<b>N</b>	4	10.16
<b>P</b>	3	7.62
<b>U*</b>	2.25	5.72
<b>R</b>	2.06	5.24

	2125-50K, IN.	CM.
<b>100K</b>		
<b>C</b>	19	48.26
<b>L</b>	5	12.70
<b>N</b>	6	15.24
<b>P</b>	5	12.70
<b>U*</b>	3	7.62
<b>R</b>	1	2.54

	2126-200K, IN.	CM.
<b>500K**</b>		
<b>C</b>	21	53.34
<b>L</b>	5.75	14.61
<b>N</b>	6.50	16.51
<b>P</b>	5.50	13.97
<b>U*</b>	4.50	11.43
<b>R</b>	1.13	2.86

\*Tolerance on shaft diameter +.0000-.0005  
\*\*Calibration performed to 300,000 lbs. in., consult factory for higher calibrations.

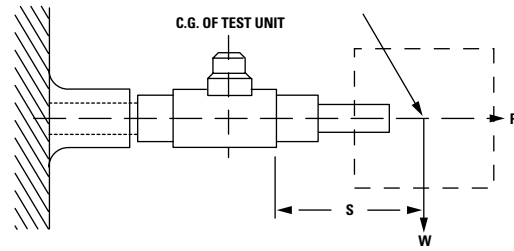
**LOAD CARRYING CAPACITY**

**W** = weight of test device

**W x S** = overhung moment

**S** = distance to center of gravity of test unit

Do not exceed moment (**W x S**) or shear (**W**), whichever value is attained first. **P** = thrust.



**SENSOR CHARACTERISTICS : 2121-2126**

MODEL NUMBER	CAPACITY lb. in. (N • m)	OVERLOAD lb. in. (N • m)	TORSIONAL STIFFNESS lb. in./rad. (N • m/rad.)	MAX. OVERHUNG MOMENT WxS lb. in. (N • m)	MAX. SHEAR W lbs. (N)	MAX. THRUST P lbs. (N)	KEY SIZE SQUARE in. (cm.)
2121-100	100 (10)	150 (15)	6,430 (726)	100 (11.30)	20 (89)	280 (1,245)	0.19 (0.48)
2121-200	200 (20)	300 (30)	17,000 (1,921)	200 (22.60)	26 (115)	400 (1,780)	0.19 (0.48)
2121-500	500 (55)	750 (85)	45,200 (5,107)	250 (28.25)	500 (2,225)	500 (2,225)	0.25 (0.64)
2121-1K	1,000 (115)	1,500 (170)	103,000 (11,637)	500 (56.50)	1,000 (4,450)	660 (2,935)	0.25 (0.64)
2121-2K	2,000 (225)	3,000 (340)	197,000 (22,256)	1,000 (113.00)	1,500 (6,675)	2,000 (8,900)	0.25 (0.64)
2122-5K	5,000 (565)	7,500 (850)	379,000 (42,819)	2,000 (225.00)	2,100 (9,340)	3,000 (13,350)	0.38 (0.95)
2122-10K	10,000 (1,130)	15,000 (1,695)	750,000 (84,734)	5,000 (450.00)	4,000 (17,800)	6,000 (26,670)	0.38 (0.95)
2124-20K	20,000 (2,250)	30,000 (3,390)	2,610,000 (294,875)	10,000 (1,130)	6,500 (28,900)	10,000 (44,480)	0.50 (1.27)
2125-50K	50,000 (5,650)	75,000 (8,475)	6,840,000 (772,777)	24,000 (2,710)	12,000 (53,375)	18,000 (80,064)	0.75 (1.91)
2125-100K	100,000 (11,300)	150,000 (16,950)	12,200,000 (1,378,346)	50,000 (5,650)	20,000 (89,000)	30,000 (133,440)	0.75 (1.91)
2126-200K	200,000 (22,600)	300,000 (33,900)	19,950,000 (2,253,935)	90,000 (10,170)	30,000 (133,440)	40,000 (177,920)	1 (2.54)
2126-500K*	500,000 (56,500)	750,000 (85,000)	25,250,000 (2,852,725)	150,000 (17,000)	42,000 (186,800)	60,000 (266,880)	1 (2.54)

\*Calibration performed to 300,000 lbs. in. Consult factory for higher calibrations.

Metric dimensions and specifications are purely mathematical calculations from standard English dimension control drawings. Request certified drawings before designing mountings or fixtures. Dimensions and specifications are subject to change without notice.

