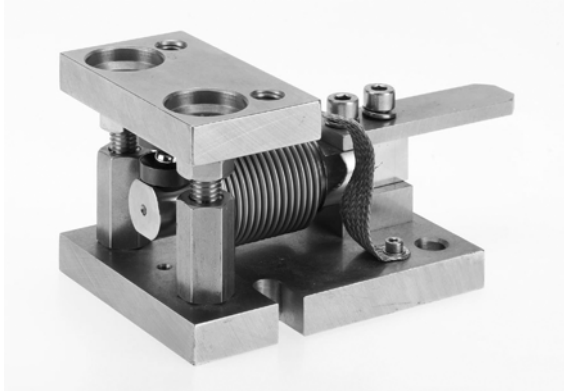


# Amber Instruments Ltd

## Low Capacity Weigh Module



### FEATURES

- Capacity range:  
11.2, 22, 44, 110, 220, 440, 551 and 1.1K lb  
(5, 10, 20, 50, 100, 200, 250, and 500K kg)
- Load beam hermetically sealed to IP68
- High-grade stainless-steel construction
- Overload and uplift safety protection
- Accommodates process dynamics and thermal expansion
- NTEP Certificate of Conformance
- FM and OIML approved

### DESCRIPTION

EZ-Mount Weigh Modules are designed for maximum accuracy coupled with a high degree of resistance to the adverse effects of overload and sideload forces. Each module consists of a bending beam transducer packaged in a rugged stainless steel mounting system. Specifically designed for use on low capacity process vessels, modules meet IP68 and NEMA 6 immersion requirements and mechanically resist high overload and sideload forces. Built in load adaption technology automatically compensates for vessel thermal expansion and contraction.

A substantial protection plate, positioned above the cable entry gland, prevents damage from plant debris and traffic.

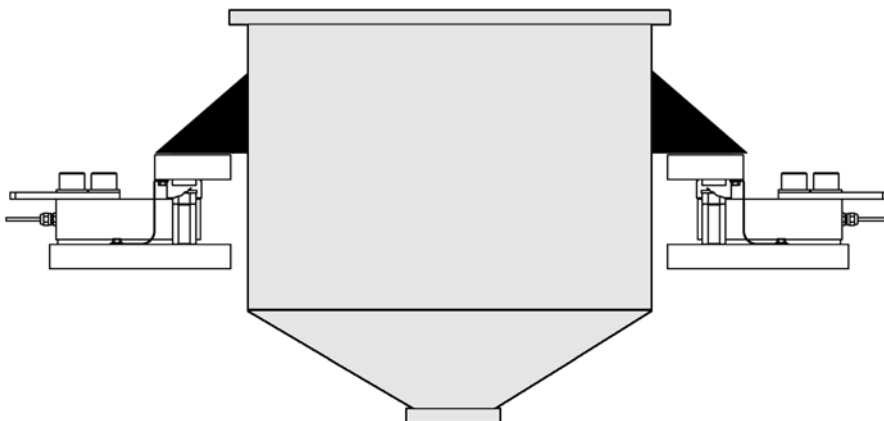
Simplified bolting patterns expedite both retrofit and new vessel installations. EZ-Mount modules can be fully installed without the load beam, reducing any risk of load cell failure. After installation, simply slide the beam into place and adjust the overload safety stops.

In frequent washdown areas, the ground strap may be removed (after installation) without affecting module performance.

### APPLICATIONS

- Storage tank weighing
- Bin/hopper scale conversion
- Level system measurement
- Loss-in-weight feeders

### CONFIGURATION



## Low Capacity Weigh Module

---

### SPECIFICATIONS

#### Performance

Capacities	11.2, 22, 44, 110, 220, 440, 551 and 1.1K lb (5, 10, 20, 50, 100, 200, 250, and 500K kg)
Rated Output (R.O.)	2.0 mV/V +/-0.1%
Repeatability	0.02% R.O.
Combined Error*	0.015% R.O.
Zero Balance	2% R.O.
Creep (30 minutes)	0.03% R.O.
Temperature Effects:	
On Zero Balance	0.0013% R.O./°F
On Span	0.0008% Load/°F

#### Electrical

Recommended Excitation	10 Vdc (15 V max.)
Input Resistance	380 ohms +/-10 ohms
Output Resistance	350 ohms +10/-3 ohms
Cable Length	9.8 foot cable with 6wire polyurethane jacket

#### Temperature

Safe Range	-22 to 176°F
Compensated Range	+14 to 104°F

#### Adverse Load Ratings

Safe Load	150% Rated Capacity
Ultimate Load	300% Rated Capacity

#### Material

Beam and Plates	high grade stainless steel
-----------------	----------------------------

#### Sealing

Environmental Class	IP68*
---------------------	-------

#### Deflection Under Load Unit Weight

All Capacities	<0.016 inch
----------------	-------------

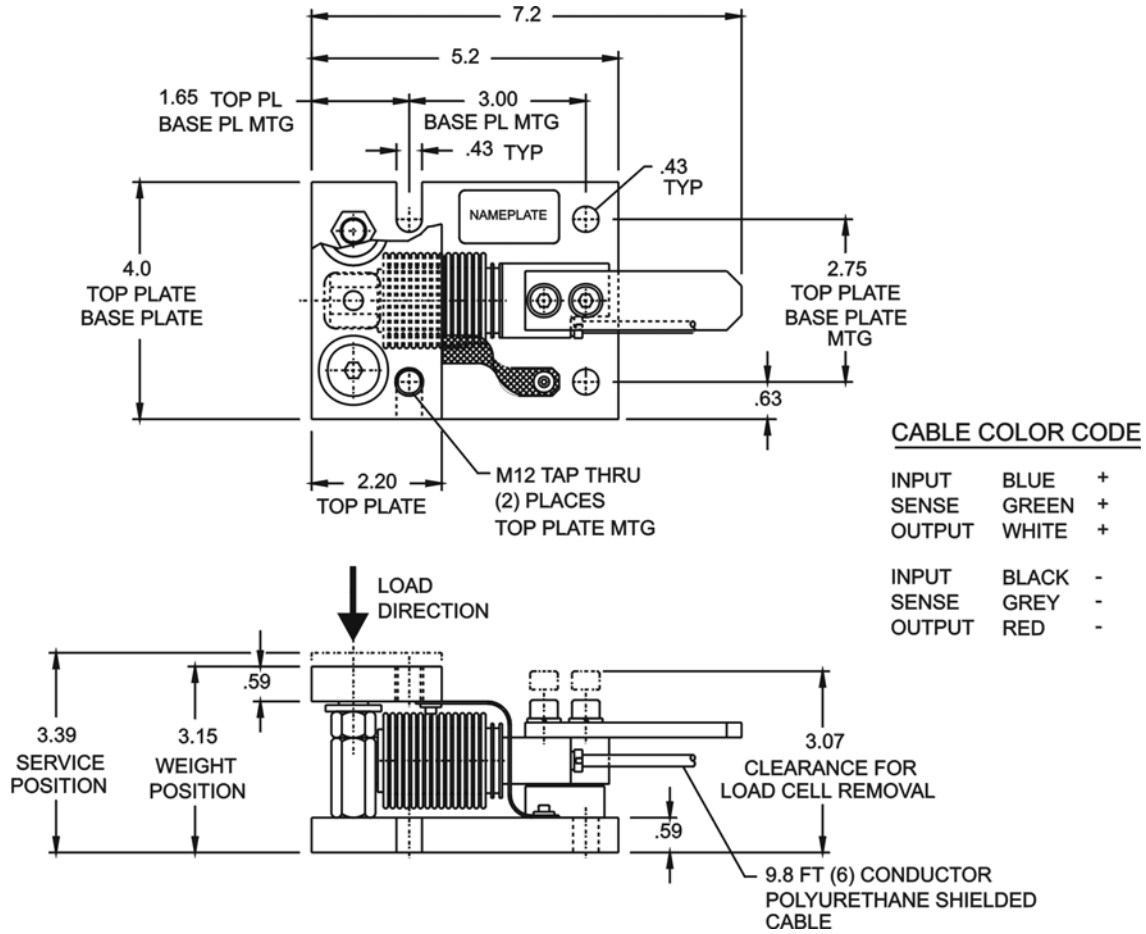
#### Approvals

NTEP Class III	4,000 single; 5,000 multiple
OIML	4,000 divisions
FM	Class I, II, III; Divisions 1, Groups A-G

\*beam specification only

# Low Capacity Weigh Module

## OUTLINE DIMENSIONS



Dunston House, Dunston Road, Chesterfield, Derbys, S41 9QD  
 Tel: 01246 260250 Fax: 01246 260955  
 e-mail: sales@amberinstruments.com web: www.amberinstruments.com

Torque Transducers, Load Cells (general purpose, weighing & fatigue rated). Multi-Axis Force/Torque, Weighing Instruments, Process Instruments, Portable Data Loggers, Pressure Sensors, Proximity Sensors, Laser (Distance Measuring) Sensors, & more.